

Patent No. D137848

# Tatekata-BASE

Steel Erection System [Column Base Plate]

The effect of system introduction

## Q. Improvement in Quality

- It is possible to adjust the tolerance with high accuracy for column independently

## C. Reduction in Cost

- It is not necessary the wire and pieces
- There is no damage for net by wire
- The work for setting wire, arrangement, removal become not necessary

## D. Reduction in Erection time

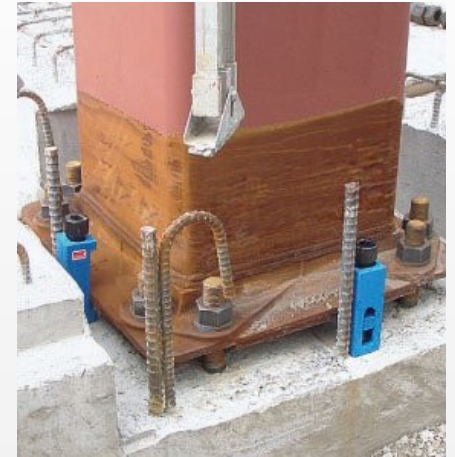
- The girder installation work can be done quickly and quietly because of the finish of adjustment.
- It is not necessary to adjust deviation after girder installed depend on situation.
- Crane column lock can be removed earlier, the quantity of members for installation per day can be increased.

# Erection Cost & Duration can be reduced largely

The method is the safety erection method for installing the girder after using Tatekata-BASE between the foundation and column base plate, to carry out the column accuracy adjustment individually.



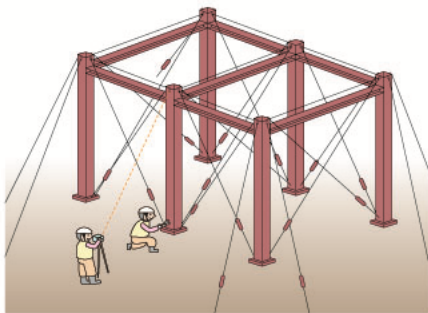
Type /B6464L, B6464H  
Weight /4kg



## S. Improvement in safety

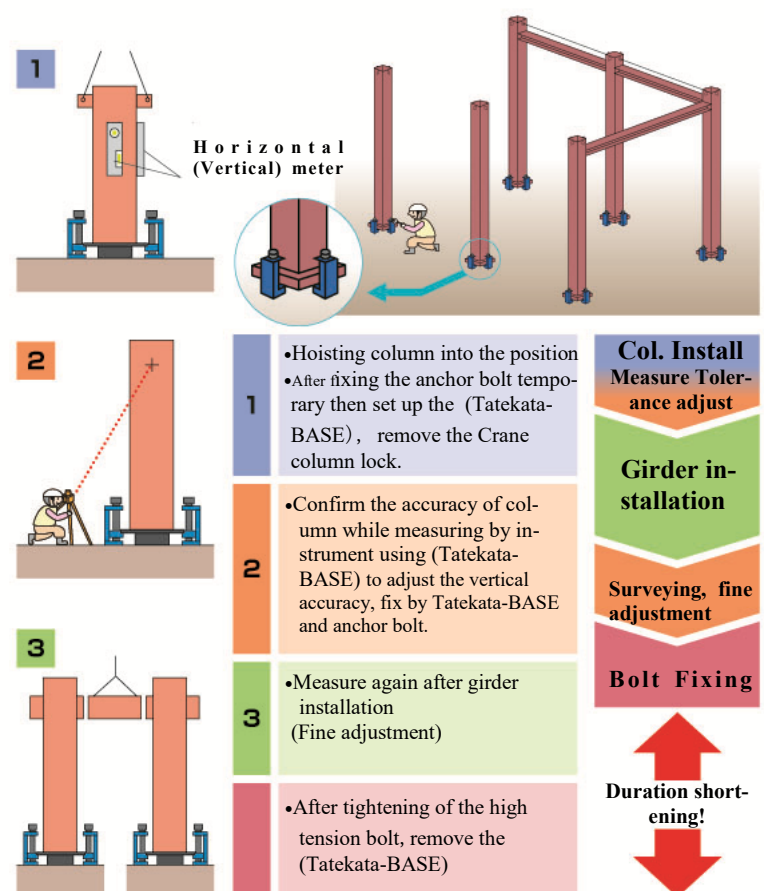
- High place operation can be reduced.
- Dangerous work for deviation adjusting can be reduced.
- There are no over stress on anchor bolt because of the hand operations, It is difficult to happen, such as damage accident.
- The collision or hit of wire will not happen when installing the beam.

## Traditional Erection Method Sequence



<b>Column Installation</b>	<ul style="list-style-type: none"> <li>● Set up the safety wire to column</li> <li>● Hoisting column into the position</li> <li>● Column temporary fix by anchor bolt</li> <li>● Set up the wire to the column to prevent column fall down</li> </ul>
<b>Girder installation</b>	<ul style="list-style-type: none"> <li>● Girder installation</li> <li>● Fixing the girder by temporary bolt</li> </ul>
<b>Measure Tolerance adjust</b>	<ul style="list-style-type: none"> <li>● Measure two direction, carry out the deviation adjustment for multiple columns at same time</li> </ul>
<b>Bolt replacement</b>	<ul style="list-style-type: none"> <li>● Replace the temporary bolt, adjustment, Fixing depends on the condition</li> </ul>
<b>Surveying, fine adjustment</b>	<ul style="list-style-type: none"> <li>● Anchor bolt tightening</li> <li>● Remove the wire, measure again (Deviation response may be occurred according the situation)</li> </ul>
<b>Bolt Fixing</b>	

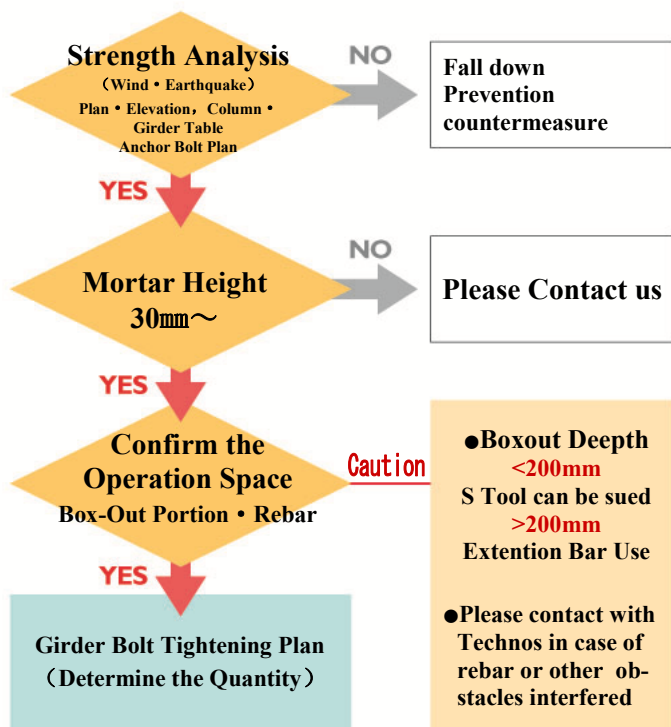
## Wireless Erection Method Sequence



TECHNOS CO., LTD.

テクノス 株式会社

## Sequence Plan

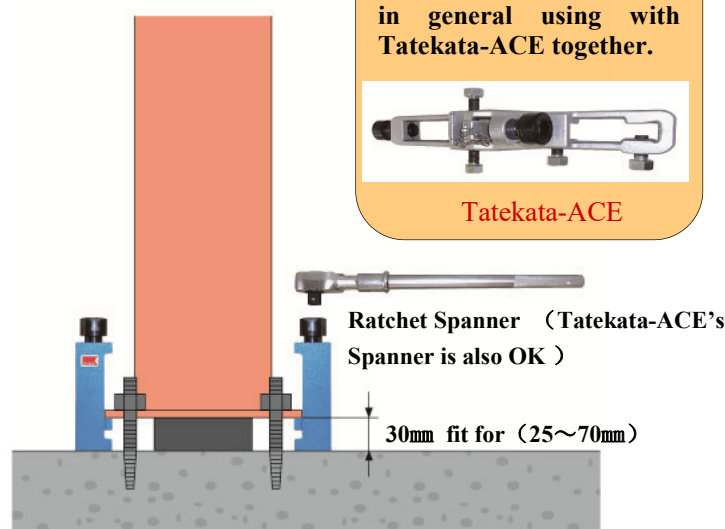


Special Storage Box  
(72nos case)

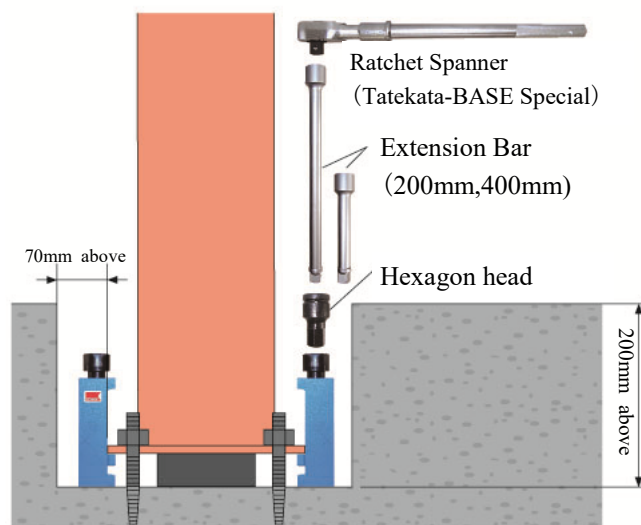


## Tool

### Without BOX-OUT



### BOX-OUT 200mm Above



※Product SPEC. in this catalogue maybe changed due to improvement without informing

ACEUP is our registered trade mark. Any inquiry regarding the product please contact with Division Engineering Department



**TECHNOS CO., LTD.**  
テクノス 株式会社

URL <http://www.technos.info>  
<http://www.technos.com.tw>



ISAQ385  
(Only for Head Office)

Head office 2-1, Honohara, Toyokawa-shi, Aichi Pre. Japan 442-0061 TEL.0533-84-1116 FAX.0533-84-1234  
Tokyo office 6F, Shimada Bldg., 2-20 Ageba-cho, Shinjuku-ku, Tokyo 162-0824 TEL.03-5228-5811 FAX.03-5228-1182  
Taiwan Branch 8F, No.390, Sec. 1, Fuxing South Rd., Taipei, Taiwan TEL:+886-2-2708-9038 FAX:+886-2-2708-9083  
Singapore Branch 2 Venture Drive, #24-01(78), Vision Exchange, Singapore 608526 TEL:+65 6914 9212

## Execution Flow

